



FOCUS FARM UPDATE

Adolph, Mary-Ann and Colin Mathis, Tokoroa

By: Mark Macintosh, Focus Farm Facilitator, AgFirst

Ph: 07 3071142 Email: mark.mac@agfirst.co.nz

Period 16-31 March 2009

Current situation summary as at 31 March 2009 unless stated otherwise

Key Indicators	Expected	Actual	
Stock on hand ce/ha	*3.00	2.80	61 on OAD milking. 2.76 in vat.
Rainfall mm for period	*41	17	3mm on 23rd
10cm Soil Temperature °C	15.0	16.0	as at 16 March
Pasture Cover kgDM/ha	2,120	2,265	as at 31 March
Pasture Growth kgDM/ha/day for period	40	40	
Grazing Rotation days	32	32	
% Supplement in diet for period	0%	29%	Grass silage(21%)/PKE(8%)
Feed Offered kgDM/cow/day for period	18.0	19.0	
Nitrogen applied to date kgN/ha	144	128	
Supplement on hand kgDM	265,200	238,600	Maize silage, Grass silage, Hay, Triticale
Cow condition	4.10	4.01	as at 1 April
% herd < 4.0cs	30%	44%	as at 27 February
Total Milksolids/ha to date	*1,155	1,161	To factory
Daily per ha Milksolids	*3.87	4.10	increased 5% in last 3 days
Daily per cow Milksolids	*1.29	1.47	based on cows in vat
Cow days in milk/ha	*675	649	
Somatic Cell Count (last 10 days)	150,000	155,000	Last 10 days average
Feed to Milk Efficiency kgDM/kgMS	*13.0	12.8	Based on feed offered

* Original target

- March has turned out to be a very dry month with only 38% of the 12 year average rainfall recorded. Soil temperature however has been slightly better than expected assisting pasture growth to reach the expected level. From now the dry is expected to negatively affect pasture growth. Rain please!
- The feed wedge (below) indicates a good supply of pasture for the next week assuming continued supplement feeding at 30% of the diet. Thereafter is a slight deficit which may well indicate supplement feeding will need to continue into April.
- Maize silage arrived on the 26 March to boost total supplement supply to 238,600 kgDM. This equates to 750 kgDM/cow wintered.
- There are still 21% of the herd on 1x/day.
- Cow condition improved by 0.06cs over March due mainly to the 1x/day herd improving bodyweight. The 1x/day cows were 3.86cs and the 2x/day cows 4.05cs.
- Currently 3.2 kgDM/cow/day of grass silage and 1.8 kgDM/cow/day of palm kernel is being offered to the 2x/day milkers. The 1x/day milkers are getting 5.8 kgDM/cow/day of grass silage.
- There is 3 tonne of palm kernel left to be fed which will signal the end of this contracted feed. No more palm kernel is expected to be purchased.
- Post-grazing pastures vary from 1,500 kgDM/ha for the 2x/day milkers to 1,700 kgDM/ha for the 1x/day milkers. As a result silage is being reduced to the 1x/day herd.

- The grazing rotation has been maintained at 32 days.
- 27 tonne fertilizer was applied over 85ha providing 2.35 tonne nitrogen (28N/ha).
- To the 31 March milk production had further improved to be 21% ahead of last year and 0.4% ahead of target (see graph below). At this time last year the herd had dried off.
- Farm Operating Profit (see graph below) to the end of March had reached \$2,300/ha. This is expected to drop to \$2,000/ha by the end of the season. This is well down on the original target of \$3,500/ha mainly as a result of lower payout.
- The projection for the next season is a \$3,000/ha Operating Profit which is an improvement on the current season due to reduced expenditure for fertilizer, purchased feed and repairs and maintenance. The aim is for costs to be under \$2.90 per kg milksolids.

Management for the next period to 15 April 2009.

The main aim for the next period will be to:

- Set goals and plan feed requirements for next season.
- Apply nitrogen with fertilizer.
- Manage cow condition ie those less than 4.0cs
- Control mastitis.

Goals for next season

The Mathis's have constructed a feed budget for the period from now to the end of next season. This is deemed necessary to determine production goals, stock numbers, and supplement requirements (refer to feedplan on website).

The feed budget indicates the following management:

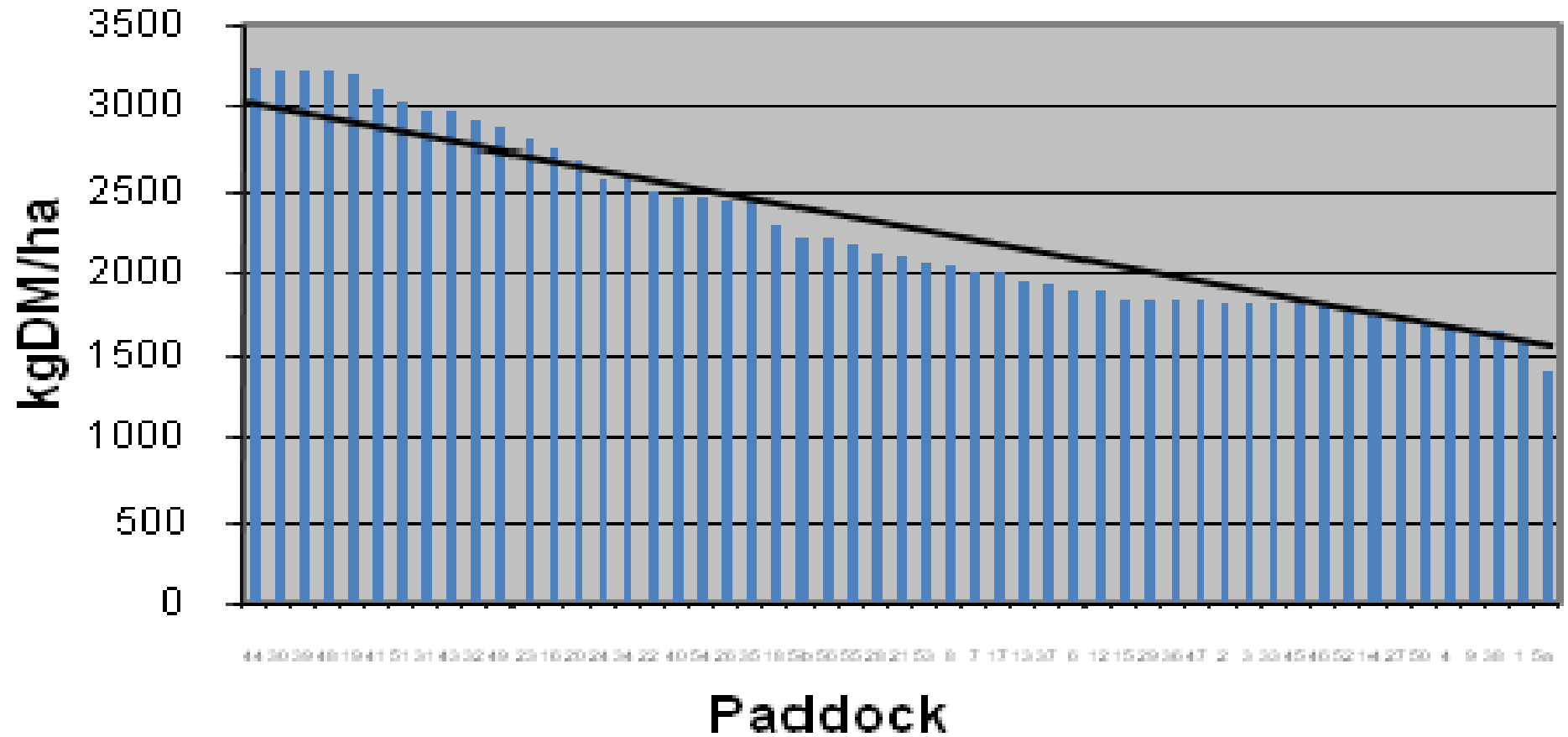
- Milk to around 11 May with 280 cows this season which should produce 129,000 kg milksolids.
- Winter 320 (245 at home) cows offering 13 kgDM/cow/day for the six week period mid May to end June which should lift cow condition up to a 5.0 average.
- Graze off 75 replacements heifers to mid July.
- Utilise the supplement on hand only – no extra purchases.
- Pasture cover to be no less than 1,800 kgDM/ha in the spring.
- Apply no more than 100 kgN/ha from April to October.
- Production target of 128,000 kg milksolids for next season.

In the short term

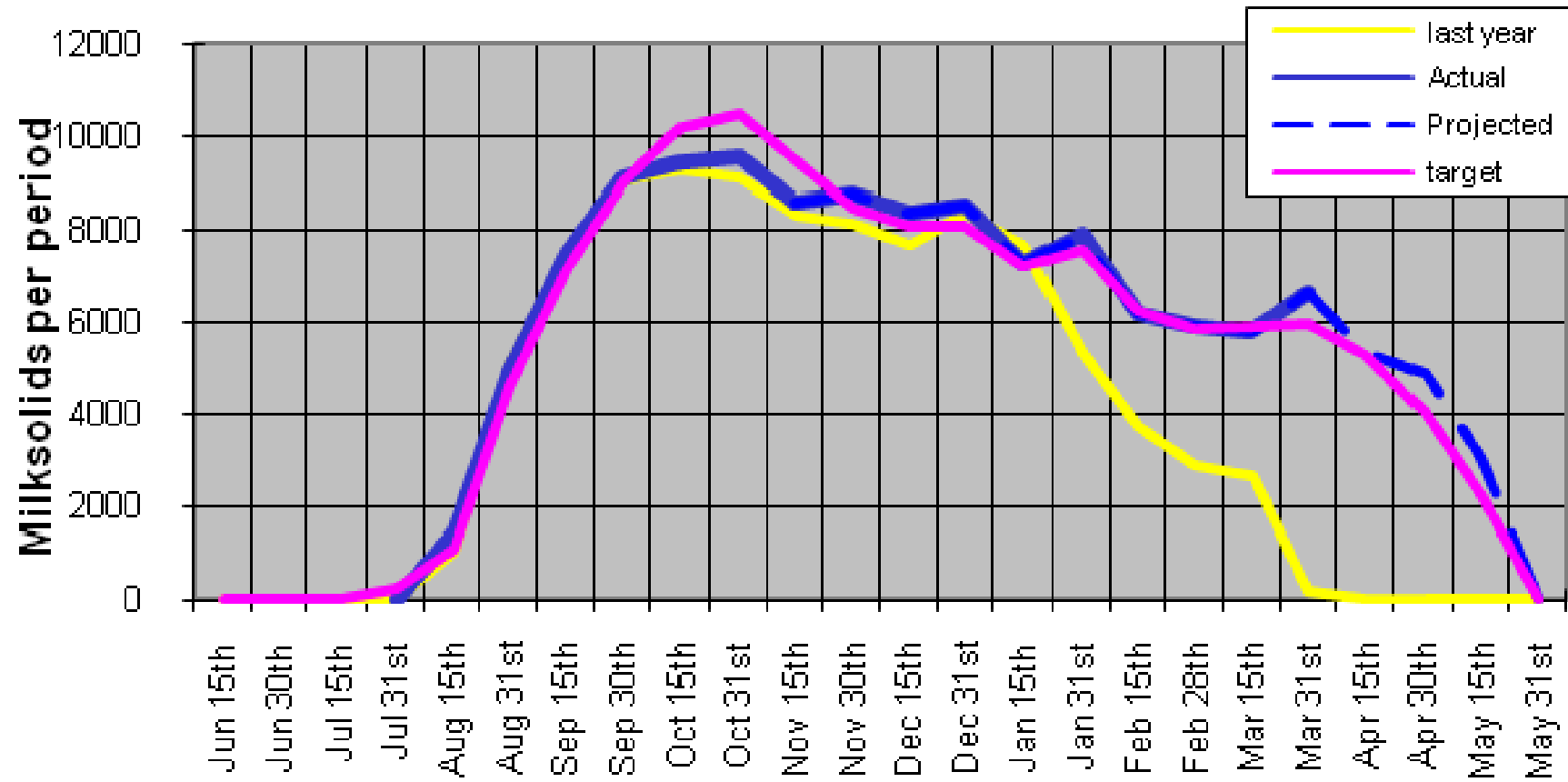
Assuming pasture growth of 35kgDM/ha/day over the next period the following management is recommended:-

- Milk 280 cows to mid April at which time cull 10 empties. Milk into early May with 270 and dry off.
- Maintain a grazing residual of no more than 1,600 kgDM/ha. Any higher than this indicates a pasture surplus to requirements.
- Maintain the current grazing rotation of 30-35 days and reduce the supplement input if pre-graze levels increase. Based on 280 cows being offered 18 kgDM/cow/day they require a pregraze level of 3,200 kgDM/ha. Supplement until this pregraze level is reached.
- It is expected a further 1.3 tonne urea will be applied over this next period.
- Continue to strategically transfer the lightest cows into the once per day herd ie. those <3.8 condition score. Currently up to 20 cows should be transferred.
- Continue to focus on maintaining the bulk somatic cell count at below 150,000. Policy will be to check whole herd twice per week.
- Milk production is on track for 129,000 kg milksolids from 306 cows (422 kgMS/cow). The previous best for the farm was 119,559 kgMS in the 2006/07 season.

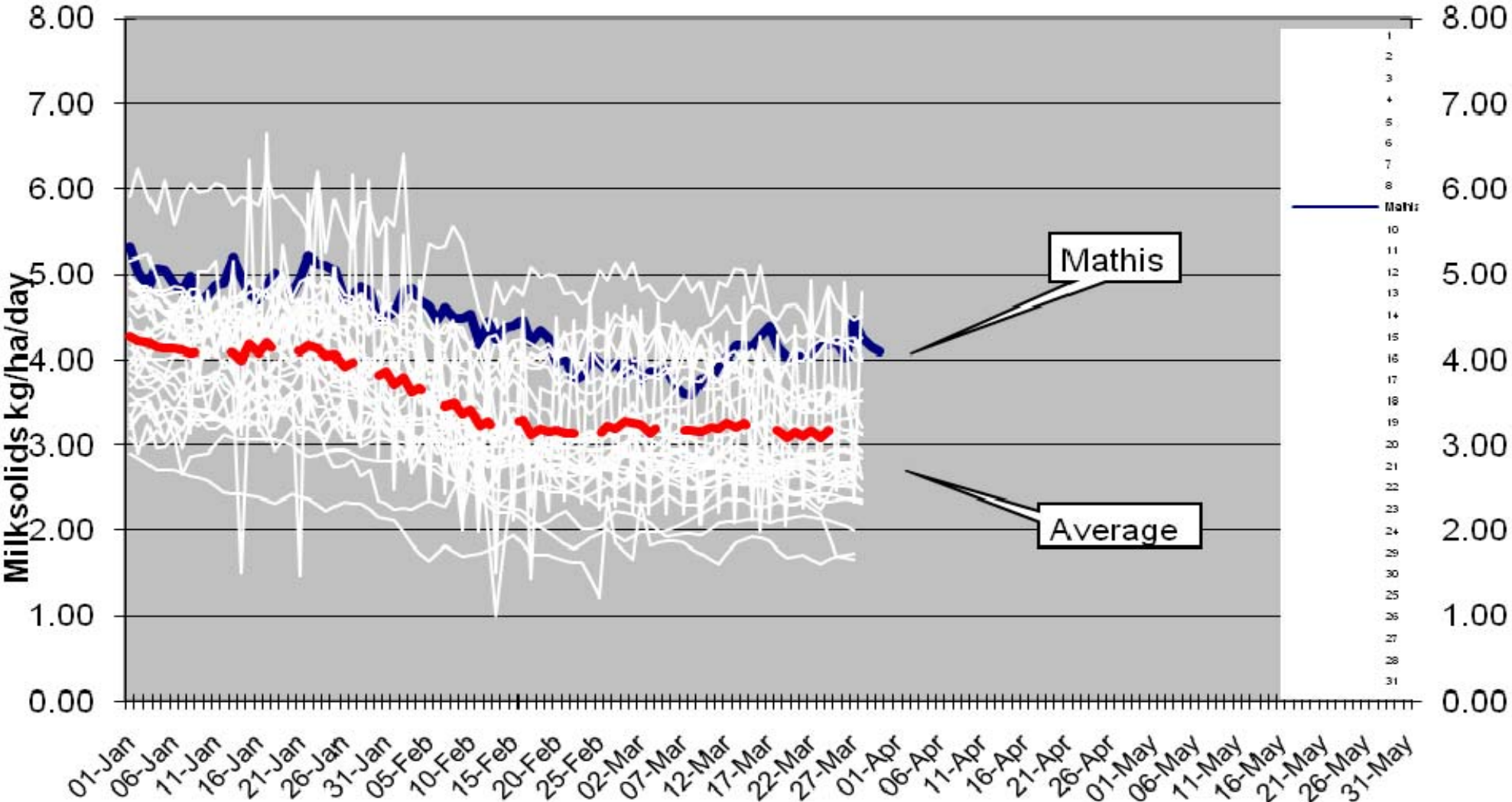
Mathis Feed Wedge 31 Mar 09



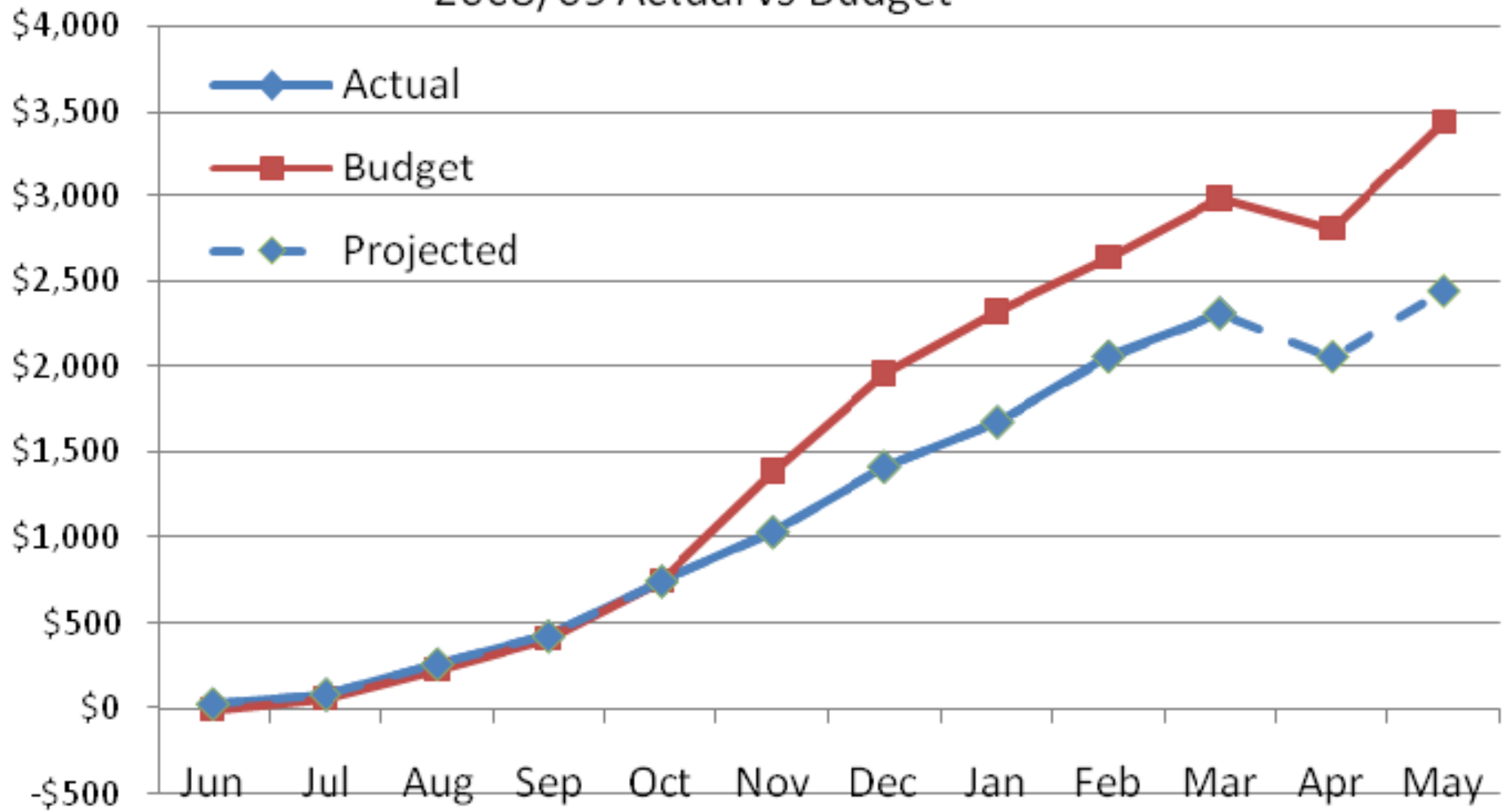
Mathis Milksolids 2008/09



Dairypush Farms - Milksolids/ha/day Comparison 2008/09



Mathis Cumulative Operating Profit
2008/09 Actual vs Budget



Mathis Cumulative Operating Profit 2009/10 Actual vs Budget

