

# QuickStats about dairying – WEST COAST-TASMAN AND MARLBOROUGH-NELSON REGIONS



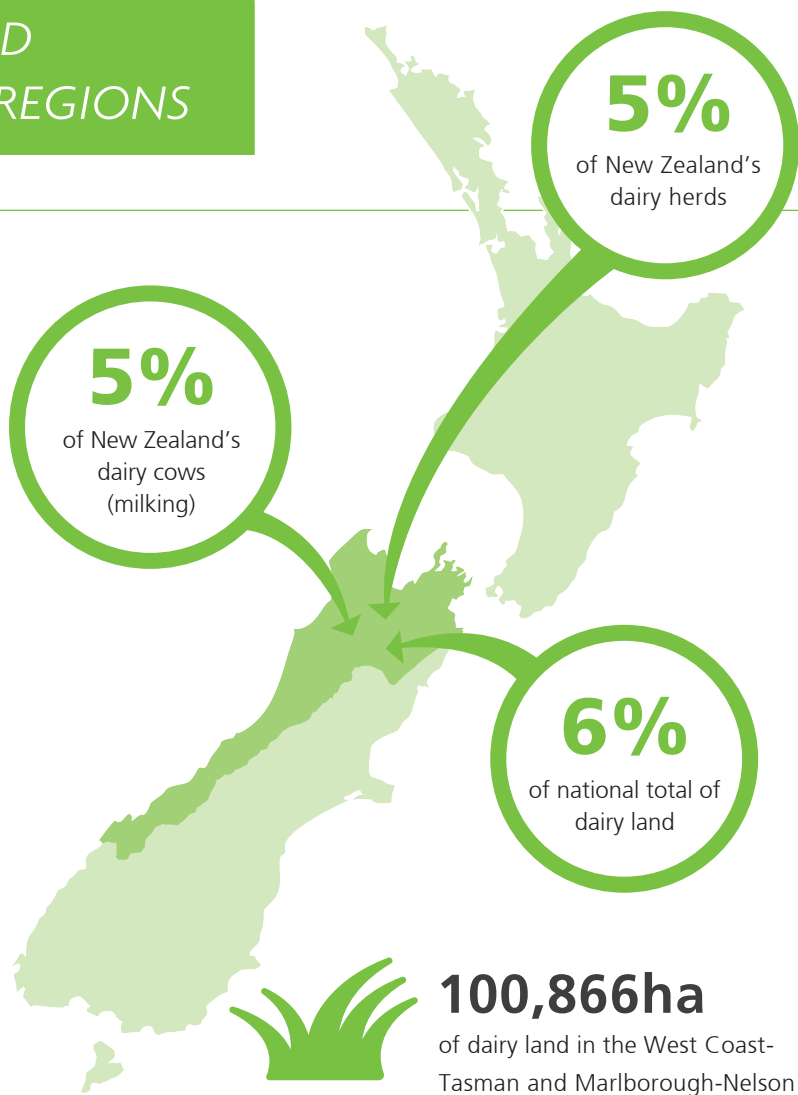
## HERDS AND COWS

Total number of herds	<b>615</b>
Average herd size	<b>397</b>
Number of cows (milking)	<b>244,056</b>



## FARMERS AND DAIRY LAND

Number of farm owner/ operators	<b>494</b>
Number of sharemilkers	<b>120</b>
Average farm size	<b>164ha</b>
Average cows per ha	<b>2.4</b>



## The value of dairying in the West Coast-Tasman and Marlborough-Nelson

Value of milk production to the regional economy

**\$333 million** (2015/16)  
(85 million kilograms of milksolids produced)

What farmers spend (on average) per cow

2015/16 farm working expenses on-farm per cow **\$1,345\***

\*this includes feed, veterinary services, fertiliser, dairy shed supplies (estimate)



## DAIRY JOBS CONTRIBUTE

**2.8%**

of the total regional employment in the West Coast-Tasman and Marlborough-Nelson.

## Numbers employed in the dairy industry in the West Coast-Tasman and Marlborough-Nelson

Number employed

On-farm  **1,808**

Processing and wholesaling  **525** (estimate)

Total dairy employment  **2,333**



[dairyatwork.co.nz](http://dairyatwork.co.nz)

Source: NZIER, New Zealand Dairy Statistics, Statistics New Zealand, DairyNZ Economics Group. Nov 2016

**DairyNZ**