

QuickStats about dairying – CANTERBURY REGION



HERDS AND COWS

Total number of herds **1,179**

Average herd size **789**

Number of cows (milking) **930,086**



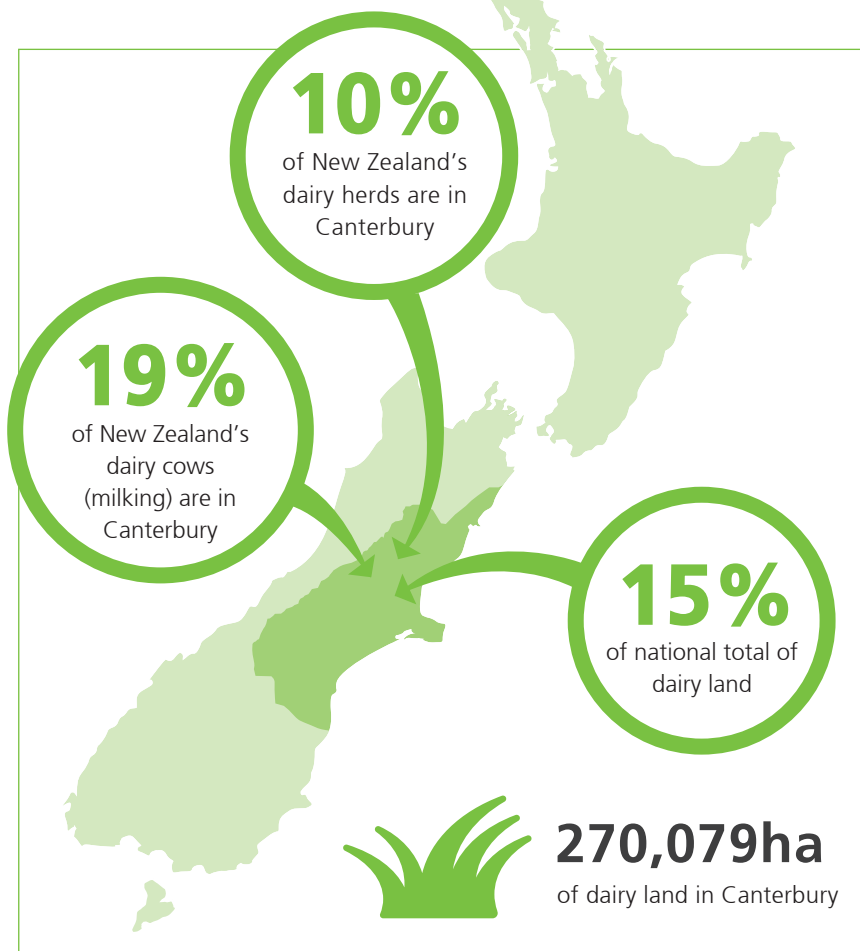
FARMERS AND DAIRY LAND

Number of farm owner/
operators **859**

Number of sharemilkers **320**

Average farm size **229ha**

Average cows per ha **3.4**



The value of dairying in Canterbury

Value of milk production to the regional economy

\$1.5 billion (2015/16)
(385 million kilograms of milksolids produced)

What farmers spend (on average) per cow

2015/16 farm working expenses on-farm per cow **\$1,618***

*this includes feed, veterinary services, fertiliser, dairy shed supplies (estimate)



DAIRY JOBS CONTRIBUTE

2.7%

of the total regional employment in Canterbury.

Numbers employed in the dairy industry in Canterbury

Number employed

On-farm  **5,536**

Processing and wholesaling  **1,870**
(estimate)

Total dairy employment  **7,406**



dairyatwork.co.nz

Source: NZIER, New Zealand Dairy Statistics, Statistics New Zealand, DairyNZ Economics Group. Nov 2016

DairyNZ