

QuickStats about dairying – HAWKE'S BAY REGION



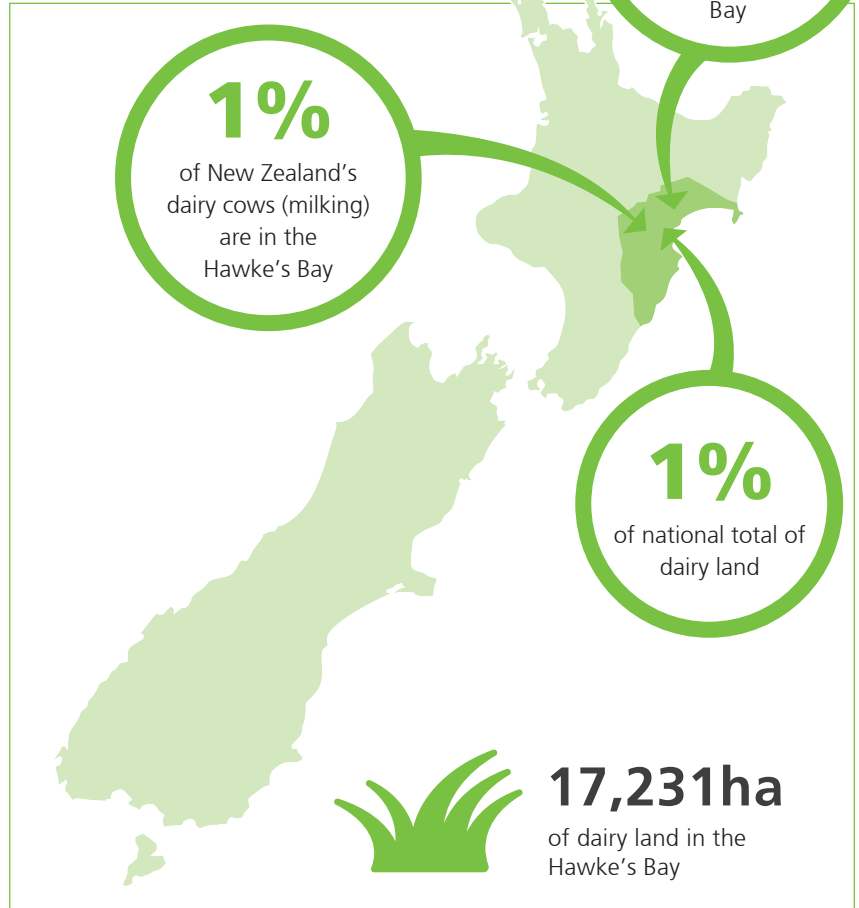
HERDS AND COWS

Total number of herds	76
Average herd size	642
Number of cows (milking)	48,770



FARMERS AND DAIRY LAND

Number of farm owner/ operators	65
Number of sharemilkers	11
Average farm size	227ha
Average cows per ha	2.8



The value of dairying in the Hawke's Bay

Value of milk production to the regional economy

\$64 million (2015/16)
(16 million kilograms of milksolids produced)

What farmers spend (on average) per cow

2015/16 farm working expenses on-farm per cow **\$1,305***

*this includes feed, veterinary services, fertiliser, dairy shed supplies (estimate)



DAIRY JOBS CONTRIBUTE

0.6%

of the total regional employment in the Hawke's Bay.

Numbers employed in the dairy industry in the Hawke's Bay

Number employed

On-farm



367

Processing and wholesaling



60
(estimate)

Total dairy employment



427



dairyatwork.co.nz

Source: NZIER, New Zealand Dairy Statistics, Statistics New Zealand, DairyNZ Economics Group. Nov 2016

DairyNZ