

# QuickStats about dairying – SOUTHLAND REGION



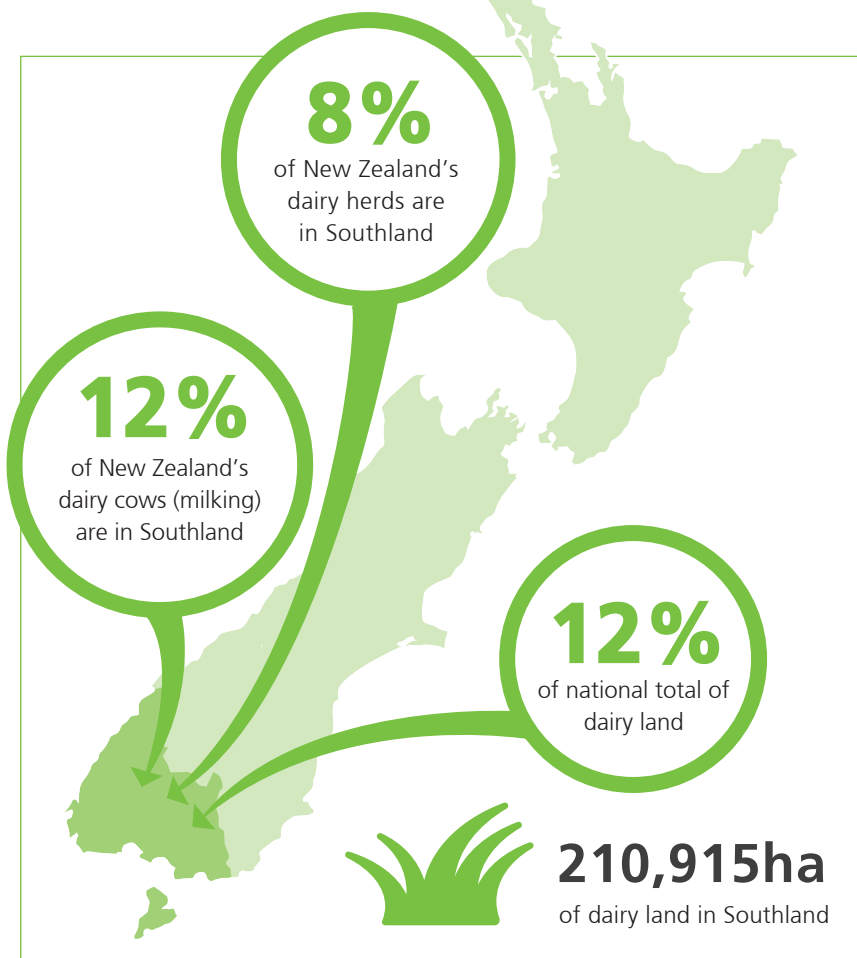
## HERDS AND COWS

Total number of herds	<b>990</b>
Average herd size	<b>581</b>
Number of cows (milking)	<b>575,384</b>



## FARMERS AND DAIRY LAND

Number of farm owner/ operators	<b>661</b>
Number of sharemilkers	<b>328</b>
Average farm size	<b>213ha</b>
Average cows per ha	<b>2.7</b>



## The value of dairying in Southland

Value of milk production to the regional economy

**\$868 million** (2015/16)  
(223 million kilograms of milksolids produced)

What farmers spend (on average) per cow

2015/16 farm working expenses on-farm per cow **\$1,450\***

\*this includes feed, veterinary services, fertiliser, dairy shed supplies (estimate)



## DAIRY JOBS CONTRIBUTE

**9.0%**

of the total regional employment in Southland.

## Numbers employed in the dairy industry in Southland

Number employed

On-farm  **3,665**

Processing and wholesaling  **730**  
(provisional)

Total dairy employment  **4,395**



[dairyatwork.co.nz](http://dairyatwork.co.nz)

Source: NZIER, New Zealand Dairy Statistics, Statistics New Zealand, DairyNZ Economics Group. Nov 2016

**DairyNZ**