

QuickStats about dairying – WAIKATO REGION



HERDS AND COWS

Total number of herds **4,020**

Average herd size **353**

Number of cows (milking) **1.40 million**



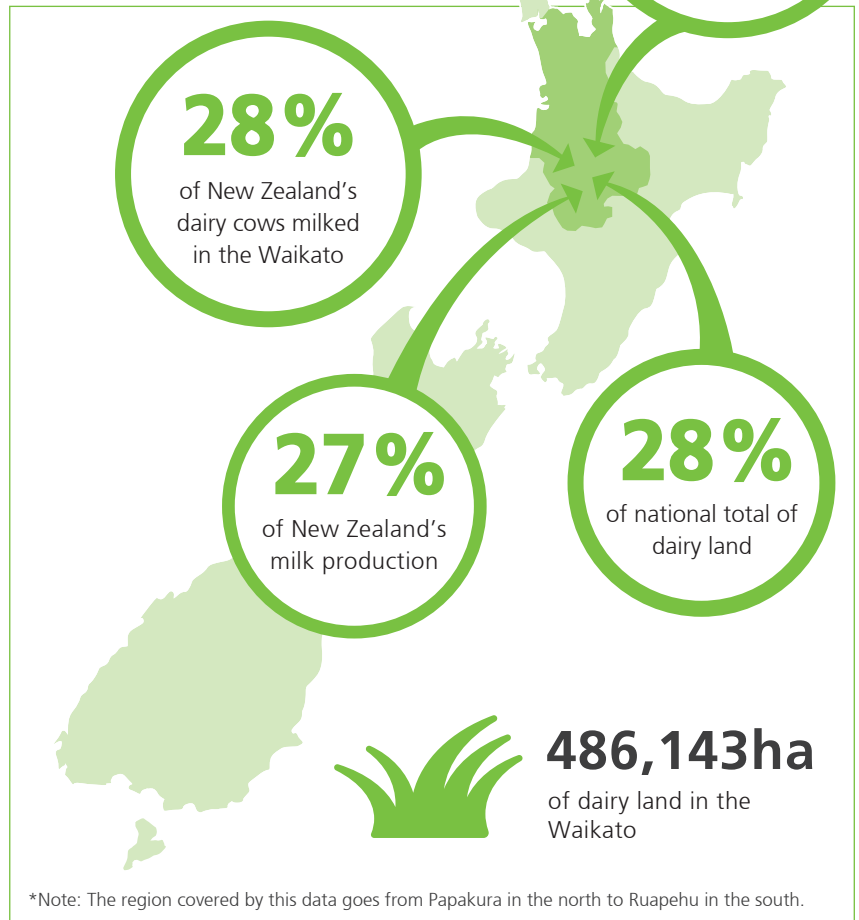
FARMERS AND DAIRY LAND

Number of farm owner/operators **2,512**

Number of sharemilkers **1,265**

Average farm size **123ha**

Average cows per ha **2.9**



The value of dairying in the Waikato

Value of milk production to the regional economy

\$2.0 billion (2015/16)
(503 million kilograms of milksolids produced)

What farmers spend (on average) per cow

2015/16 farm working expenses on-farm per cow **\$1,300***

*this includes feed, veterinary services, fertiliser, dairy shed supplies (estimate)



DAIRY JOBS CONTRIBUTE

7.4%

of the total regional employment in the Waikato.

Numbers employed in the dairy industry in the Waikato

Number employed

On-farm  **9,910**

Processing and wholesaling  **3,432 (estimate)**

Total dairy employment  **13,342**



dairyatwork.co.nz

Source: NZIER, New Zealand Dairy Statistics, Statistics New Zealand, DairyNZ Economics Group. Nov 2016

DairyNZ 