

QuickStats about dairying – WELLINGTON-WAIRARAPA REGION



HERDS AND COWS

Total number of herds **458**

Average herd size **363**

Number of cows (milking) **166,192**



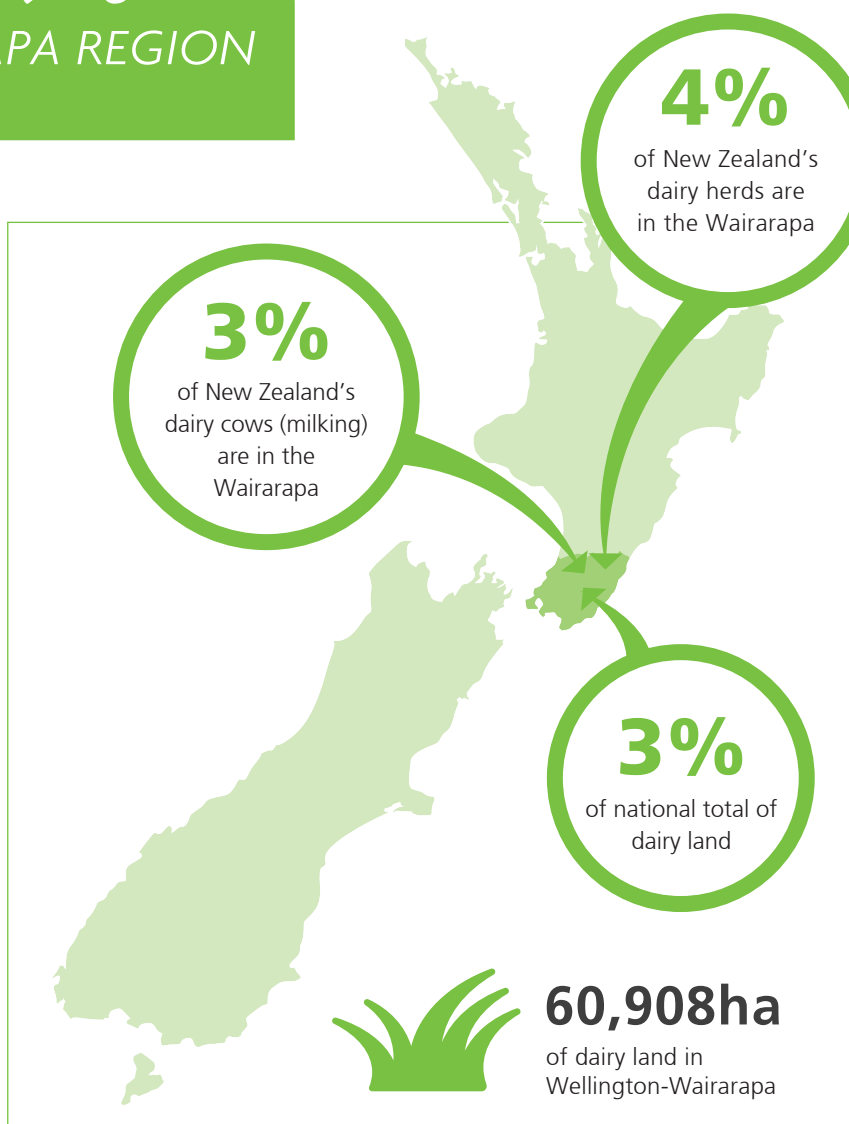
FARMERS AND DAIRY LAND

Number of farm owner/
operators **341**

Number of sharemilkers **117**

Average farm size **133ha**

Average cows per ha **2.7**



The value of dairying in Wellington-Wairarapa

Value of milk production to the regional economy

\$230 million (2015/16)

(59 million kilograms of milksolids produced)

What farmers spend (on average) per cow

2015/16 farm working expenses on-farm per cow **\$1,305***

*this includes feed, veterinary services, fertiliser, dairy shed supplies (estimate)



DAIRY JOBS CONTRIBUTE

0.7%

of the total regional employment in Wellington-Wairarapa.

Numbers employed in the dairy industry in Wellington- Wairarapa

Number employed

On-farm  **1,250**

Processing and wholesaling  **245**
(estimate)

Total dairy employment  **1,495**



dairyatwork.co.nz

Source: NZIER, New Zealand Dairy Statistics, Statistics New Zealand, DairyNZ Economics Group. Nov 2016

DairyNZ