

# QuickStats about dairying – CANTERBURY REGION



## HERDS AND COWS

Total number of herds **1,184**

Average herd size **764**

Number of cows (milking) **905,076**



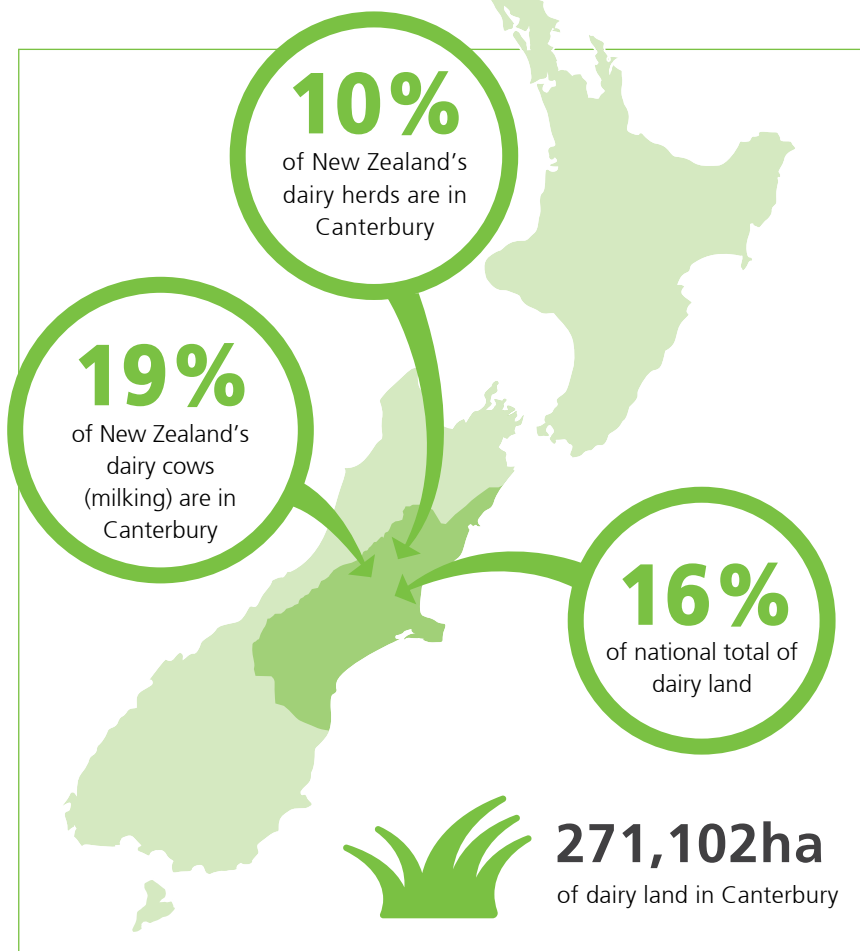
## FARMERS AND DAIRY LAND

Number of farm owner/  
operators **914**

Number of sharemilkers **270**

Average farm size **229ha**

Average cows per ha **3.3**



## The value of dairying in Canterbury

Value of milk production to the regional economy

**\$2.3 billion** (2016/17)  
(385 million kilograms of milksolids produced)

What farmers spend (on average) per cow

2016/17 farm working expenses on-farm per cow **\$1,700\***

\*this includes feed, veterinary services, fertiliser, dairy shed supplies (estimate)



## DAIRY JOBS CONTRIBUTE

**2.6%**

of the total regional employment in Canterbury.

## Numbers employed in the dairy industry in Canterbury

Number employed

On-farm  **5,485**

Processing and wholesaling  **2,152**

Total dairy employment  **7,637**



[dairyatwork.co.nz](http://dairyatwork.co.nz)

Source: NZIER, New Zealand Dairy Statistics, Statistics New Zealand, DairyNZ Economics Group. Nov 2017

**DairyNZ**