

QuickStats about dairying – HAWKE'S BAY REGION



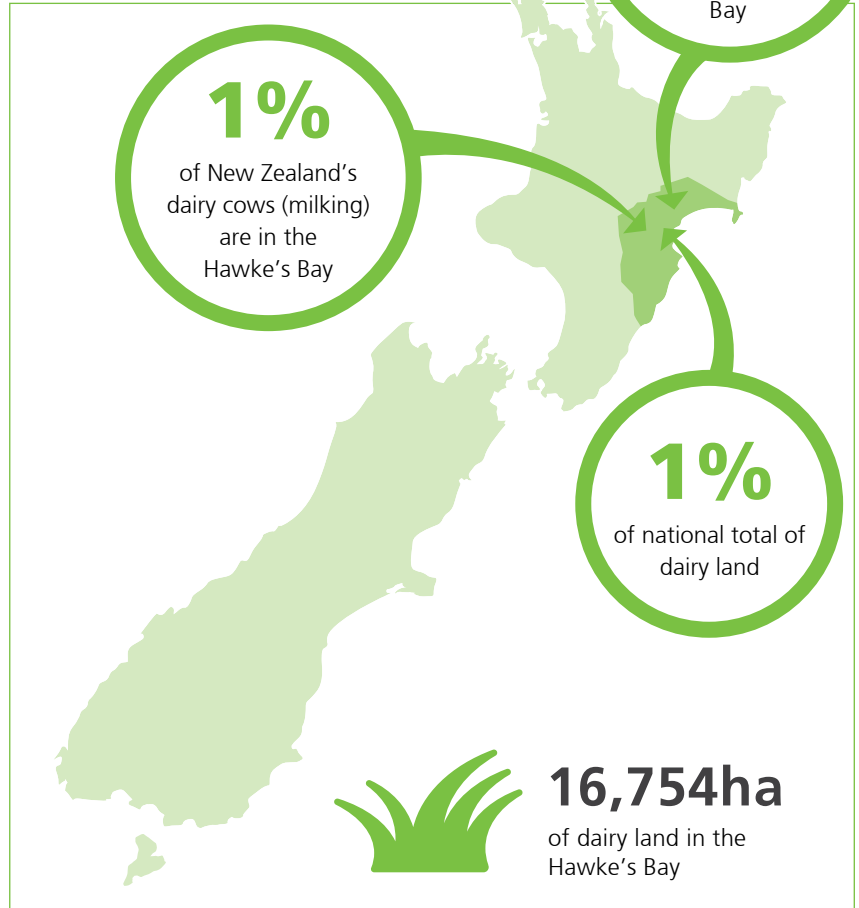
HERDS AND COWS

Total number of herds	73
Average herd size	626
Number of cows (milking)	45,687



FARMERS AND DAIRY LAND

Number of farm owner/ operators	61
Number of sharemilkers	12
Average farm size	230ha
Average cows per ha	2.7



The value of dairying in the Hawke's Bay

Value of milk production to the regional economy

\$87 million (2016/17)
(15 million kilograms of milksolids produced)

What farmers spend (on average) per cow

2016/17 farm working expenses on-farm per cow **\$1,400***

*this includes feed, veterinary services, fertiliser, dairy shed supplies (estimate)



DAIRY JOBS CONTRIBUTE

0.6%

of the total regional employment in the Hawke's Bay.

Numbers employed in the dairy industry in the Hawke's Bay

Number employed

On-farm



333

Processing and wholesaling



97

Total dairy employment



430



dairyatwork.co.nz

Source: NZIER, New Zealand Dairy Statistics, Statistics New Zealand, DairyNZ Economics Group. Nov 2017

DairyNZ