

# QuickStats about dairying – OTAGO REGION



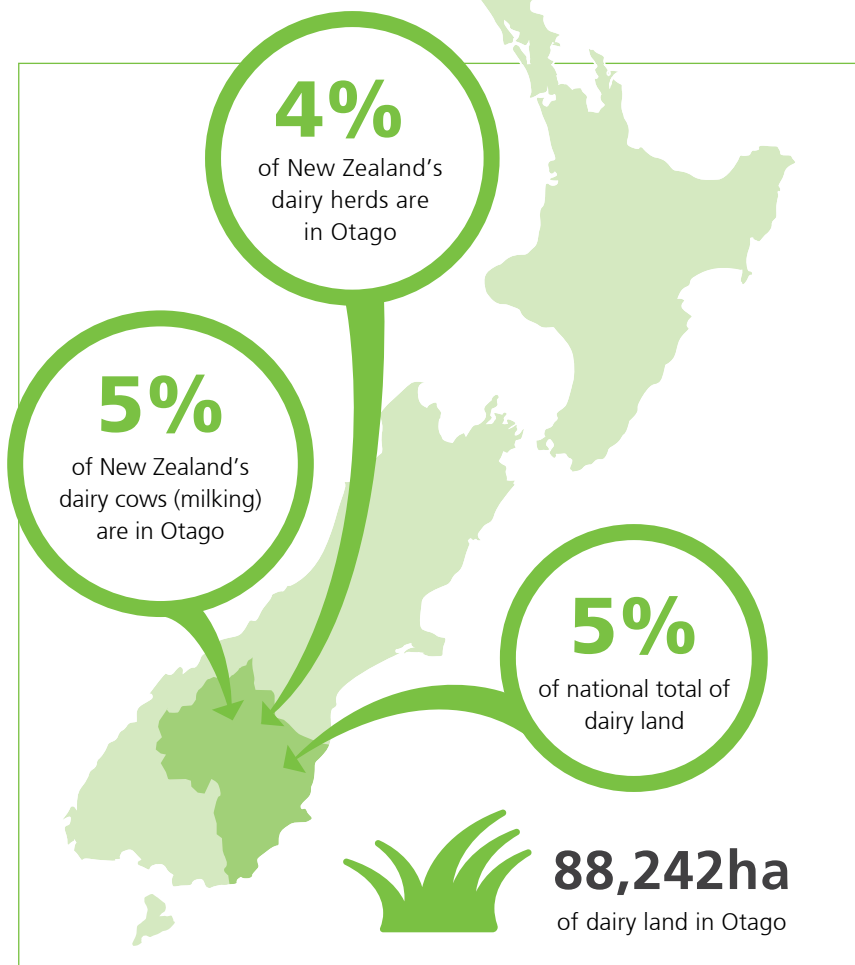
## HERDS AND COWS

Total number of herds	<b>439</b>
Average herd size	<b>584</b>
Number of cows (milking)	<b>256,497</b>



## FARMERS AND DAIRY LAND

Number of farm owner/ operators	<b>299</b>
Number of sharemilkers	<b>140</b>
Average farm size	<b>201ha</b>
Average cows per ha	<b>2.9</b>



## The value of dairying in Otago

Value of milk production to the regional economy

**\$606 million** (2016/17)  
(103 million kilograms of milksolids produced)

What farmers spend (on average) per cow

2016/17 farm working expenses on-farm per cow **\$1,588\***

\*this includes feed, veterinary services, fertiliser, dairy shed supplies (estimate)



## DAIRY JOBS CONTRIBUTE

**1.9%**

of the total regional employment in Otago.

## Numbers employed in the dairy industry in Otago

Number employed

On-farm  **1,785**

Processing and wholesaling  **373**

Total dairy employment  **2,158**



dairyatwork.co.nz

Source: NZIER, New Zealand Dairy Statistics, Statistics New Zealand, DairyNZ Economics Group. Nov 2017

DairyNZ 