

QuickStats about dairying – WELLINGTON-WAIRARAPA REGION



HERDS AND COWS

Total number of herds **443**

Average herd size **363**

Number of cows (milking) **160,675**



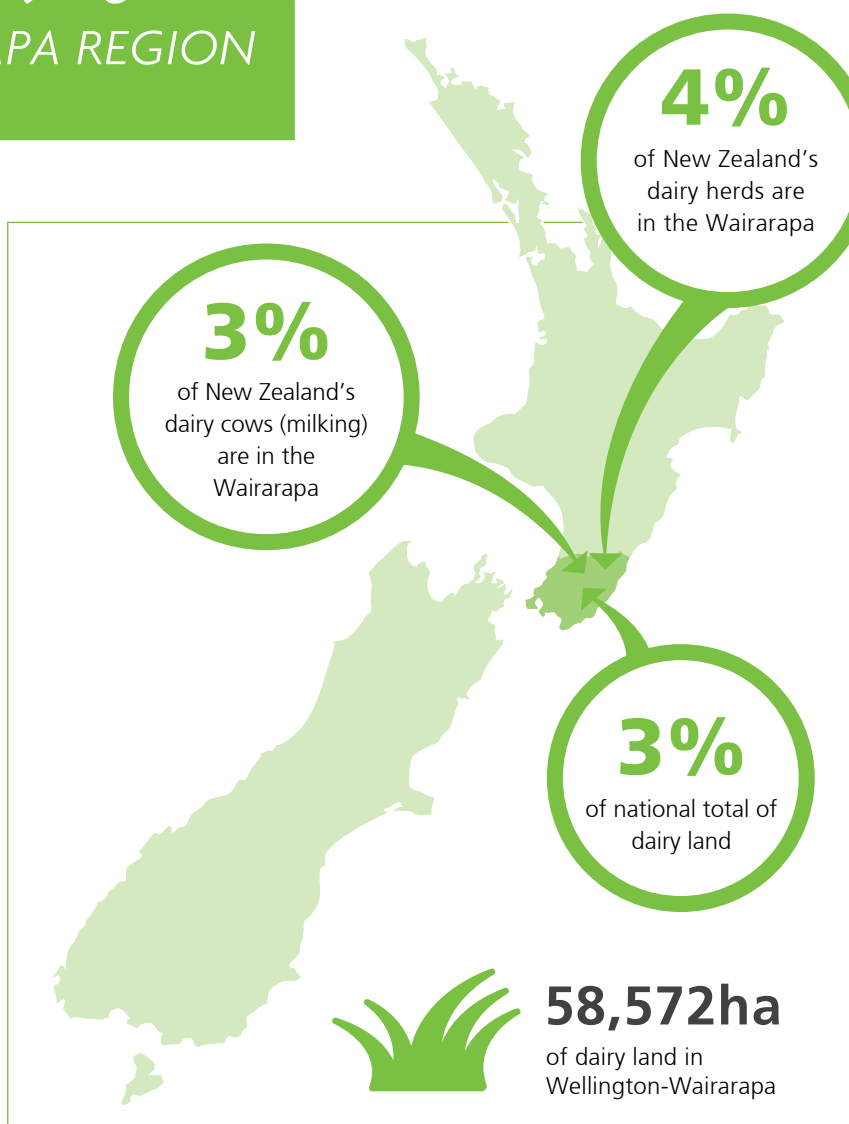
FARMERS AND DAIRY LAND

Number of farm owner/
operators **341**

Number of sharemilkers **102**

Average farm size **132ha**

Average cows per ha **2.7**



The value of dairying in Wellington-Wairarapa

Value of milk production to the regional economy

\$336 million (2016/17)
(57 million kilograms of milksolids produced)

What farmers spend (on average) per cow

2016/17 farm working expenses on-farm per cow **\$1,400***

*this includes feed, veterinary services, fertiliser, dairy shed supplies (estimate)



DAIRY JOBS CONTRIBUTE

1.0%

of the total regional employment in Wellington-Wairarapa.

Numbers employed in the dairy industry in Wellington-Wairarapa

Number employed

On-farm  **1,317**

Processing and wholesaling  **327**

Total dairy employment  **1644**



dairyatwork.co.nz

Source: NZIER, New Zealand Dairy Statistics, Statistics New Zealand, DairyNZ Economics Group. Nov 2017

DairyNZ