

Top Tips for Effluent Management

Prevention and Maintenance

1 Use water efficiently.



2 Avoid rubbish entering the system, including afterbirth.



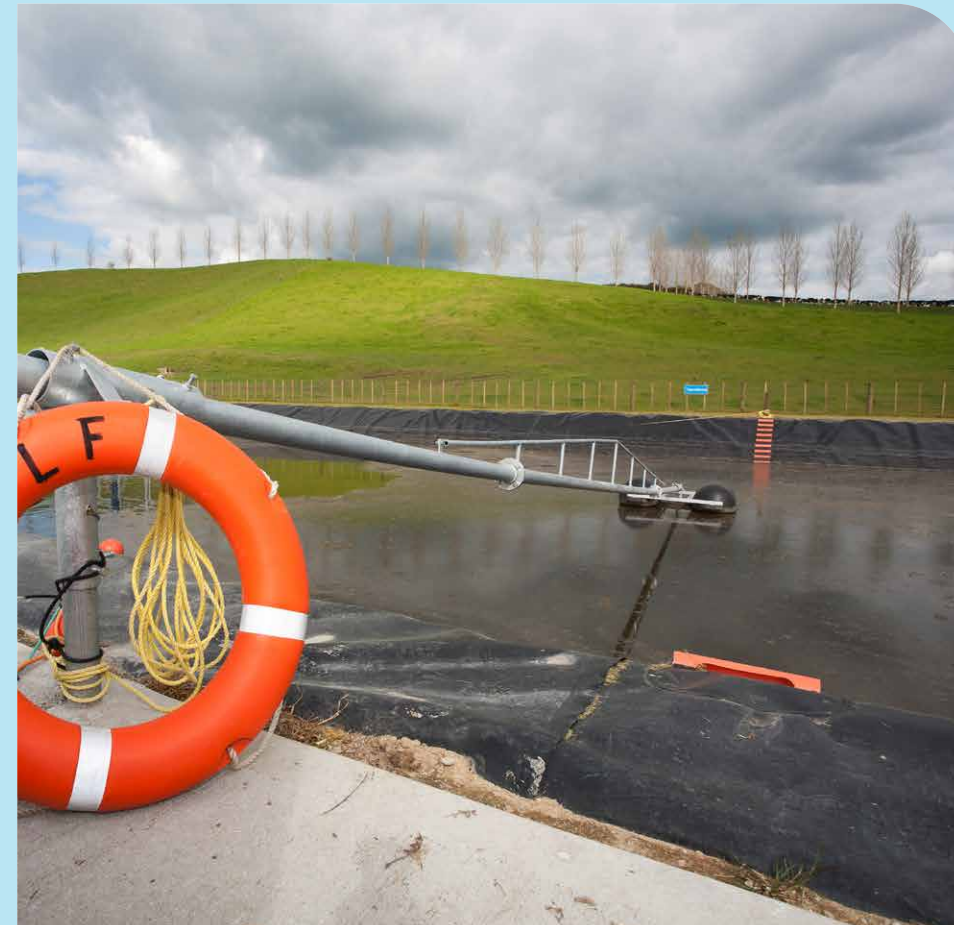
3 Complete routine maintenance e.g. greasing/ emptying the grit trap.



4 Ensure maintenance activities are performed as required.



Storage



- Manage effluent application rates dependent on seasonal conditions and reduce application rate when soil moisture is elevated.
- Apply effluent to actively growing pastures (ideally 5-10 days post grazing).

Monitor

1 Monitor effluent application.



- 2**
- Consider effluent fail-safe systems such as auto-shutoff.
 - Identify issues promptly e.g. leaking hoses, blocked nozzles.



Record



- Keep records of all effluent application including paddock, volumes and any repairs conducted.
- Consider annual spreading depth testing to ensure uniform application.

Train



- Ensure people managing the effluent system are trained.
- Have clear roles and tasks assigned to staff for system operations and maintenance.